

HIGH VOLUME BAG-TYPE INLET FILTER

MODELS SF0100, SF0250, SF0630, SF1000



DESCRIPTION

The Busch high volume bag-type filter is intended for use in applications where large volumes of solids or liquids may be present in the inlet gas stream and "self-cleaning" is needed.

This two-stage inlet filter separates matter first by cyclonic (centrifugal) action, followed by physical separation by a 5 micron bag-type element. This element is in the form of a loosely mounted, inverted cone-type, polyester filter that is inherently self-cleaning. As a cake is formed on the under side of the filter fabric, it is loosened by the motion of the element. These particles then fall to the bottom of the steel housing. A drain is provided for liquids and an additional large clean-out port allows removal of solids. All covers and internal components are sealed by Buna O-rings to ensure vacuum integrity and to keep particulates from entering the vacuum pump.

The filter medium is cleanable and easily replaceable. Pressure drop is kept to a minimum due to a large surface area.

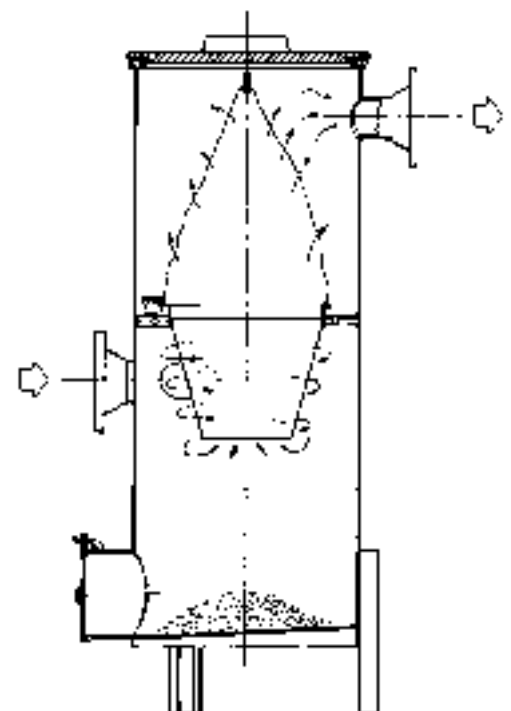
Capacity Ratings

Model	Rating
SF0100	100 CFM
SF0250	250 CFM
SF0630	500 CFM
SF1000	1000 CFM

Consult factory for specific applications.

FEATURES

- Liquids and solids separation
- Large capacity
- Low pressure drop
- Clean-out port
- Cleanable and replaceable elements
- 5 micron self-cleaning element
- Four sizes for pumps having capacities up to 1000 CFM
- Standard material-carbon steel. Contact factory for other materials
- Standard bag material is polyester. Contact factory for other materials

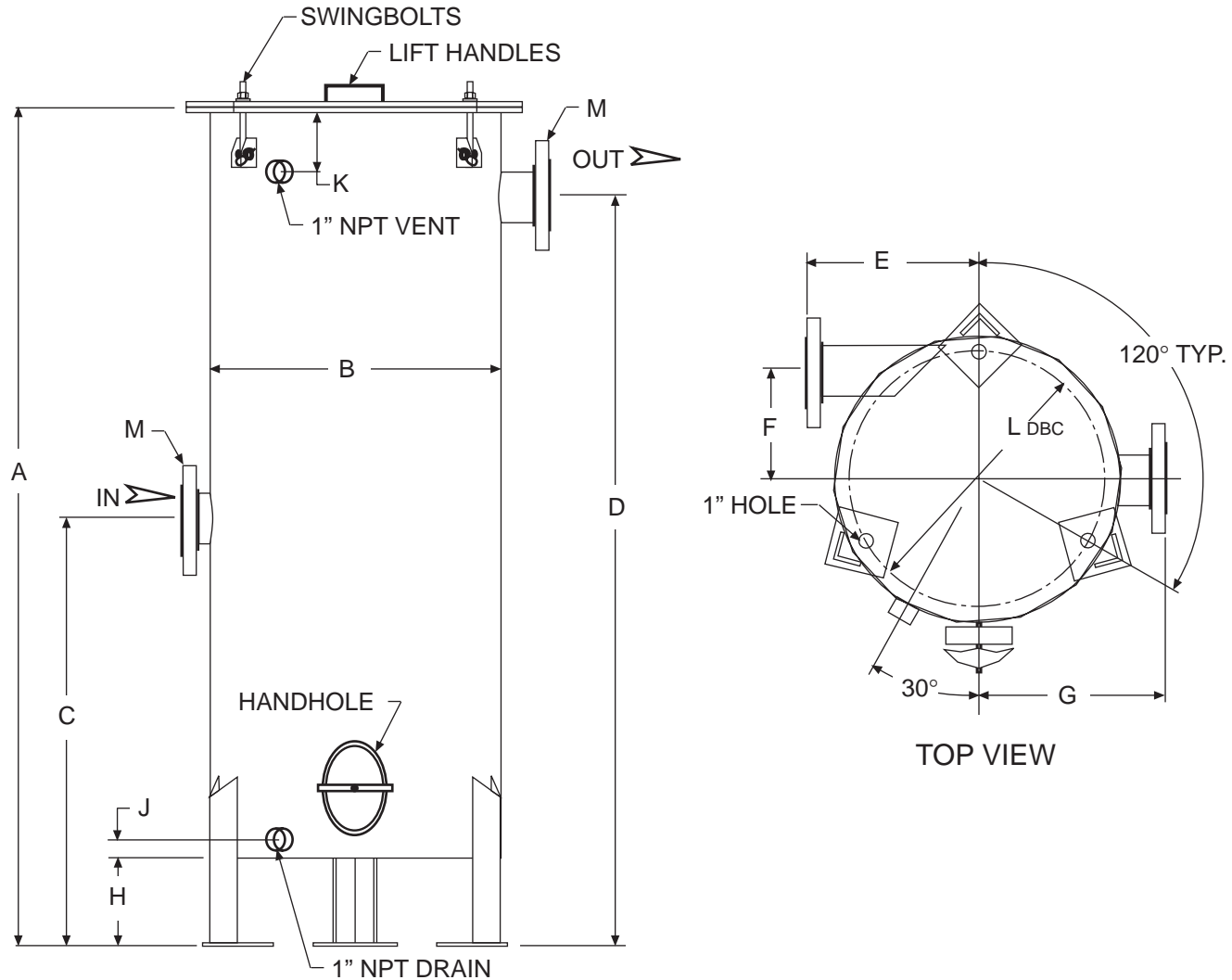


HIGH VOLUME BAG-TYPE INLET FILTER

MODELS SF0100, SF0250, SF0630, SF1000



DIMENSIONAL DATA



Model:	A	B	C	D	E	F	G	H	J	K	L	M
SF0100	28	12	11 ¹³ / ₁₆	23 ⁵ / ₈	9 ³ / ₈	4 ³ / ₄	9 ³ / ₈	3 ¹⁵ / ₁₆	1 ³ / ₈	4	9 ¹ / ₂	1 ¹ / ₂ " ANSI 150#
SF0250	43	14 ¹ / ₂	21 ⁵ / ₈	38 ³ / ₁₆	9 ¹³ / ₁₆	5 ¹ / ₂	9 ¹³ / ₁₆	5 ⁷ / ₈	1 ³ / ₈	4	12	2" ANSI 150#
SF0630	57 ¹³ / ₁₆	20	29 ¹ / ₂	52	11 ¹³ / ₁₆	7 ¹¹ / ₁₆	13 ³ / ₈	5 ⁷ / ₈	1 ³ / ₈	4	17 ¹ / ₂	3" ANSI 150#
SF1000	68 ³ / ₁₆	24	29 ¹ / ₂	61 ³ / ₈	15 ⁷ / ₁₆	7 ⁷ / ₈	15 ⁷ / ₁₆	5 ⁷ / ₈	1 ³ / ₈	4	21 ¹ / ₂	6" ANSI 150#

Busch, Inc.

516 Viking Drive
 Virginia Beach, VA 23452
 Phone (757) 463-7800
 FAX (757) 463-7407
 www.buschpump.com

For more information call
1-800-USA-PUMP

ISO 9001 Registered Company

Holland, Spain, Switzerland, Sweden, Turkey, Denmark, England, Australia, Italy, France, China, Germany, Taiwan, Japan, Austria, Canada

Models and specifications are subject to change without notice.

HBVF-11-8/03-1M